

2022 ST. PAUL ISLAND TOUR

COVID-19 PLAN



Remote. Wild. Unbelievable.

1. 2022 Tour COVID-19 Island Protection and Safety Plan

A. Introduction

Due to the ongoing COVID-19 pandemic, strict guidelines in accordance with health experts and the CDC must be followed in order to keep residents of Saint Paul Island safe, as well as the guests traveling to and from the island. In addition, there are special concerns that apply and increased care must also be taken as the healthcare system on the island is extremely limited in capacity and the resident population is uniquely prone to infectious viruses (predominantly colder temperatures, confined areas, etc.). With this said, we believe that a Tour program can be conducted safely in 2022. Safety has always been the utmost priority for St. Paul Island Tour and we have not hesitated to cancel the prior two seasons in 2020 and 2021. A testament to our commitment to the safety of all who travel on our St. Paul Tour is that to this day we remain accident and injury free.

It has now been over two years since COVID-19 reached the United States. COVID-19 protocols, testing, and vaccines have become widespread and Saint Paul Island has achieved an eighty-six percent vaccination rate against the virus. We have adapted these safety protocols for St. Paul Island Tour in accordance with guidance from the CDC, the State of Alaska, the Municipality of Anchorage, and the City of Saint Paul, and Saint Paul Island Unified Command, all of which are included herein. There have been many successful examples of safe tourism practices across the country, and we are adopting the industry-best standard to ensure a successful, safe, and enjoyable 2022 tour season. Our plan is divided into three primary phases or courses of action as outlined in the following pages with appendices to reference.

All sections and subsections in this plan are subject to change at the request of the City of Saint Paul.

2. COVID-19 Protocol: Pre-entry into the State of Alaska [Anchorage]

- A. St. Paul Island Tour website communications will bulletin and advise our protocols and requirements to guests ahead of bookings.
- B. All guests and Tour guides must agree to our Terms & Conditions (Appendix 2a) before bookings are confirmed.

-
- C. All guests and Tour guides must also agree to our COVID-19 St. Paul Tour Protocols (2022 Tour COVID-19 Safety and Island Protection Plan; this document herein).
 - D. All guests and Tour guides will be required to follow all active State of Alaska and Municipality of Anchorage health mandates, if any are active.
 - 1. Presently (18 Feb 2022), there are no active health mandates or advisories within the State of Alaska or the Municipality of Anchorage.

3. COVID-19 Protocol: Pre-entry to Saint Paul Island, Alaska

- A. All guests and Tour guides will be required to follow City of Saint Paul, Alaska Emergency Ordinances pertaining to COVID-19 travel mandates for entry to Saint Paul Island (Appendix 4a).
- B. Prior to receiving confirmed travel documents (Ravn Alaska flight & St. Paul Island Tour reservation confirmations), all guests will be checked for a valid COVID-19 vaccination certificates for entry to Saint Paul Island.
 - 1. Three-dose vaccinations will be required for all St. Paul Island Tour employees and guests.
- C. St. Paul Island Tour shall submit a Group COVID-19 Travel Form for each group of individuals traveling to Saint Paul Island.

- D. In accordance with City of Saint Paul Emergency Ordinances, a copy of each individual's vaccination card is required to be submitted to the City of Saint Paul prior to travel.
 - 1. Tour employees (i.e. guides) will also be required to submit COVID-19 vaccination cards.
 - 2. City of Saint Paul entry requirements are subject to change.
- E. In accordance with the City of Saint Paul Emergency Ordinances, a negative molecular based COVID-19 test result must also be received, taken within 72 hours of travel to Saint Paul Island.
- F. A COVID-19 Screening Form must be completed by each guest in advance of the flight (Appendix 3a).
- G. A temperature check will be conducted immediately prior to boarding the flight to Saint Paul Island (below 100.3°F will be considered healthy).
- H. Ravn Alaska (air carrier) will perform a secondary verification that all passengers are approved for travel before boarding.
 - 1. St. Paul Island Tour will submit a list of approved travelers to Ravn Alaska for each flight no less than 48 hours prior.
- I. Ravn Alaska protocols will be required to be followed by all guests (See Appendix 3b).
- J. In the event of a canceled flight resulting in an "expired" COVID-19 test result (i.e., a test now taken greater than 72 hours prior), each guest shall submit to a rapid COVID-19 test (antigen or molecular). A negative test result will be required from this second test before boarding the flight.

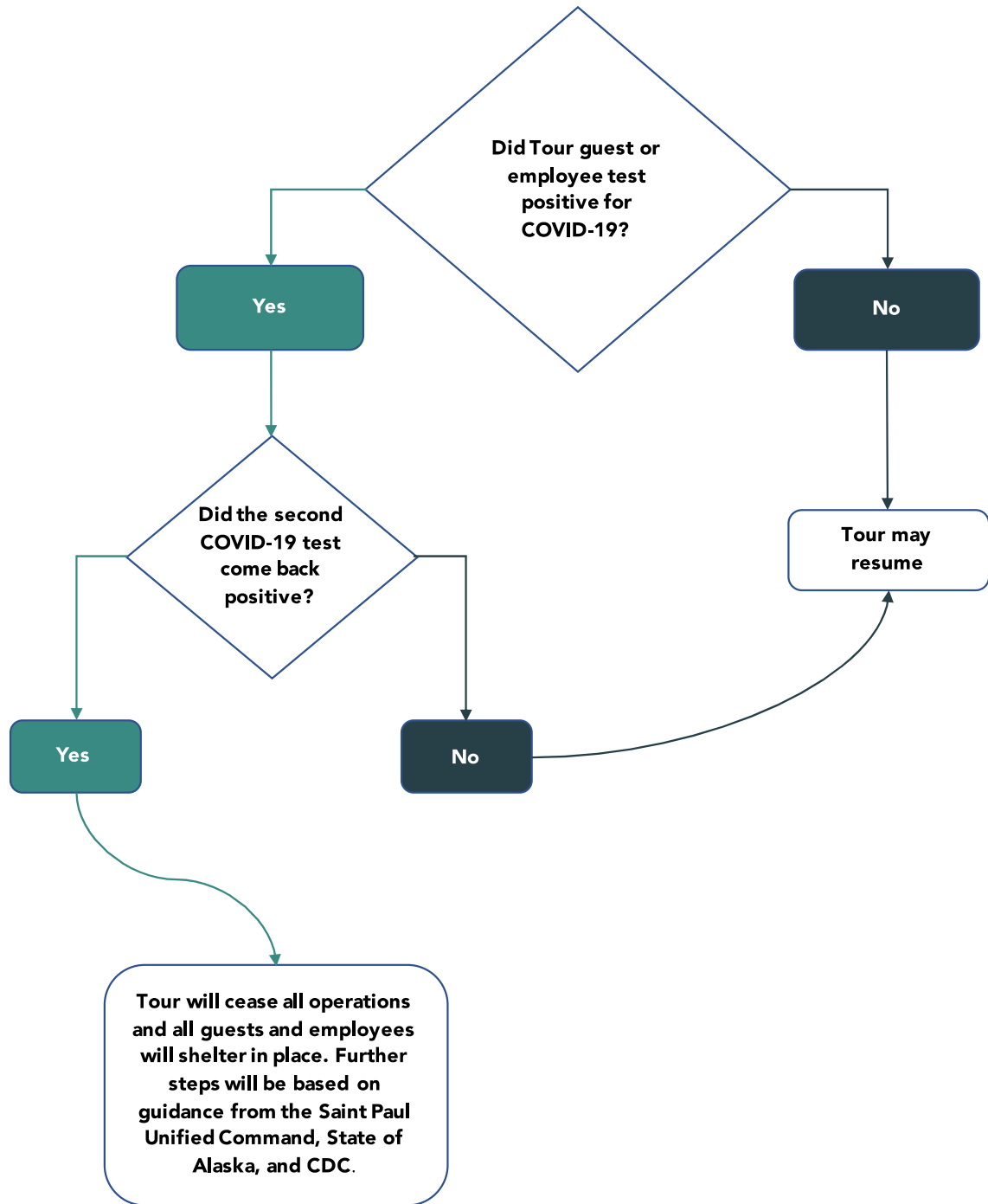
4. COVID-19 Protocol: While Present on Saint Paul Island, Alaska

- A. All guests and Tour guides will be required to follow City of Saint Paul, Alaska Emergency Ordinances pertaining to COVID-19 while on Saint Paul Island (Appendix 4a).
- B. Once guests arrive, they will receive their room keys in a contactless manner and head straight to their rooms to get settled.
- C. Guest orientation will occur in the King Eider Hotel B-wing lounge, away from public gathering spaces, such as the terminal.
- D. All guests will be a part of a functional 'bubble' at POSS Camp (approximately three miles from the town), where they may not come into contact with any residents of Saint Paul Island, including the hotel manager (See Appendix 4b for location of POSS Camp). Tour guides will reside at A-Dorm with identical social restrictions and the 'bubble' will be maintained across both locations.
 - 1. POSS Camp will be secured with restricted access for residents of Saint Paul Island.
 - 2. During flights, only ticketed passengers will be allowed in the Ravn Alaska terminal as is currently allowed. All other residents must remain outside/in their vehicles.
 - 3. All Tour passengers will wait in B-wing before being called for boarding the aircraft.
 - 4. The 'bubble' concept is the core and central component of the St. Paul Island Tour COVID-19 plan.

- E. All guests and employees will observe standard Tour COVID-19 Protocols.
 - 1. Masks are required to be worn while in all indoor spaces (except for personal rooms), inside Tour vehicles, and when distances of six feet between individuals cannot be maintained.
 - 2. Social distancing guidelines will be enforced at all times, except when guests are inside their personal rooms.
 - 3. Guests will be required to report symptoms daily, or lack thereof, accompanied by daily temperature checks performed by a Tour employee (below 100.3°F will be considered healthy). All will be logged on the Health Monitoring Checklist (See Appendix 4c) and filed for future reference if needed.
 - 4. Touch point sanitizing stations will be provided by Tour in addition to sanitizing wipes for use on optics.
- F. Meals will be provided via a self-sufficient commissary operation at POSS Camp with Coast Hotel Restaurant support staff and personnel.
 - 1. All Coast Hotel COVID-19-related food protocols will be observed and followed.
- G. Tour vehicles will be sanitized daily (after field sessions) with an electrostatic disinfectant sprayer.
- H. The King Eider Hotel will undergo enhanced sanitization in accordance with *Coast Clean™* protocols (Appendix 4d; document attached separately).
 - 1. Housekeepers will be vaccinated for COVID-19 in accordance with TDX Employee Mandates and will follow Coast Hotel protocols (temperature checks, PPE, social distancing).
 - 2. Housekeeping services will be limited and only carried out during hours when guests are outside of the hotel.
- I. Guests and Tour guides will not be permitted to enter public places in town or residents' homes (including, but not limited to the Aleut Community Store, Post Office, City Hall). See City of Saint Paul Emergency Ordinances for a detailed list.
 - 1. If a guest or Tour guide requires goods from the store, they will be acquired on behalf of the guest by a Saint Paul Island TDX employee and delivered in a contactless manner.
 - 2. Tour vehicles will be filled with gasoline by the gas attendant and the Tour guides will remain in the vehicle (contactless), using a cell phone if necessary.
- J. In the event any guest or employee presents COVID-19-related symptoms, they will be isolated to City-provided quarantine lodging reserved for Tour quarantine and COVID-19 tests will be promptly administered at the Saint Paul Health Clinic.
 - 1. The Tour Manager will provide a formal notification at once to the Saint Paul Unified Command and Saint Paul Health Center (Clinic Administrator and Medical Director).
 - 2. A tracking form and action plan will also be submitted.

3. While the test result is pending, Tour will go into limited operation and all Tour guests and Tour guides will be isolated at POSS Camp until further notice.
4. Current CDC guidance is that persons who have been in close contact with someone who has COVID-19 are not required to quarantine if they have been fully vaccinated and show no symptoms.
5. See Figure 1 (below); COVID-19 Test Result Flow Chart.

Figure 1: COVID-19 Test Result Flow Chart



5. Expedition-class Vessel Port of Calls

6. After careful evaluation, the determination has been made that leisure cruise vessel port of calls will not be permitted (i.e., shore visits) at Saint Paul Island in 2022 due to the difficult-to-mitigate safety risk that is posed to the community.
7. This will be reviewed and further evaluated again in December 2022 in regards to the 2023 Tour season.

6. Sample Three Day/Two Night Tour Itinerary

A. Day One

1. Passenger checks in at Ravn Alaska counter – Ravn will perform a final verification that passenger is on approved travel roster provided by St. Paul Island Tour.
2. Passenger will fill out a COVID-19 Screening Form – which will be filed by Ravn.
3. Passenger will submit to a temperature check prior to boarding.
4. After arriving at Saint Paul Island, passenger will pick up key envelope and head straight to B-Wing room.
5. Guest orientation will occur in B-Wing lounge.
6. A short afternoon field session with guides.
7. Dinner at Hotel Commissary.
8. Evening Field Session with guides.
9. Guest will submit to a PM symptom and temperature check, to be recorded on form.
10. Bedtime.

B. Day Two

1. Guest wakes up for the day.
2. AM symptom and temperature check recorded on form.
3. Breakfast at Hotel Commissary.
4. Morning field session with guides.
5. Lunch at Hotel Commissary.
6. Afternoon field session with guides.
7. Dinner at Hotel Commissary.
8. Evening field session with guides.
9. PM symptom and temperature check recorded on form.
10. Bedtime.

C. Day Three

1. Guest wakes up for the day.

2. AM Symptom and Temperature Check recorded on form.
3. Breakfast at Hotel Commissary.
4. Morning field session with guides.
5. Lunch at Hotel Commissary.
6. Guest prepares for flight departure.
7. Final PM symptom and temperature check recorded on form.
8. Guest will be sequestered in B-wing while awaiting call for boarding.
9. Guest departs on Ravn Alaska flight.

7. Additional Considerations:

- A. All protocols and mandates herein are subject to update and change to conform to current mandates and guidance issued by the CDC, State of Alaska, Municipality of Anchorage, and City of Saint Paul.

8. Appendix

2a. St. Paul Island Tour 2022 Terms & Conditions	10
3a. COVID-19 Screening Form	21
3b. Ravn Alaska COVID-19 Protocols	22
4a. City of Saint Paul Emergency Ordinance 22-93	23
4b. St. Paul Island Map and Location of POSS Camp	24
4c. Health Monitoring Checklist	25
4d. <i>Coast Clean</i> [™] Protocol	26

Appendix 2a – St. Paul Island Tour Terms & Conditions

TERMS AND CONDITIONS

TOUR MANAGEMENT

The St. Paul Island Tour (“Tour”) is operated by St. Paul Island Tour, LLC (“St. Paul Island Tour”), located at 3601 C Street, Suite 1000, Anchorage, Alaska 99503. Telephone (907) 278-2312, or email to info@stpaultour.com, and information via the web at: www.stpaultour.com.

Participation in the Tour is subject to these Terms and Conditions.

SCHEDULED DEPARTURES

Tour departures will take place according to the published schedule for the 2022 operating season, which is May 15, 2022 through October 16, 2022.

TOUR REQUIREMENTS AND PROTOCOLS – COVID-19 – FOR ALL TRAVELLERS 2022

In concern for the health and safety of all residents of the community of St Paul, Alaska, we require that all travelers booked for the 2022 season must present proof of a valid and complete (three dose) vaccination for the COVID-19 virus. Vaccination must be completed a minimum of two weeks prior to travel to the island of St Paul. For further information and updates concerning restrictions to travel and other requirements in respect to COVID-19 protocols, please consult the website: www.stpaulislandtour.com.

RESERVATIONS AND PAYMENT SCHEDULE

Before a Tour reservation will be confirmed, St. Paul Island Tour must be paid (A) a non-refundable deposit of \$250 toward the purchase price within ten (10) days of booking and (B) the balance of the purchase price not fewer than sixty (60) days prior to the date of departure. If the deposit or payment of the balance of the purchase price for the Tour is not received by St. Paul Island Tour when due, the reservation shall be cancelled.

If your reservation is made within 60 days of departure, the entire purchase price of the Tour must be paid at the time of booking in order to secure confirmation. Rebooking a cancelled reservation will be on a space available basis.

RESERVATION CHANGES

Rescheduling of reservation dates or transfer of a Tour reservation from one individual to another is subject to a \$50 change fee. Rescheduling is also subject to space availability.

CANCELLATIONS – COVID-19-RELATED

If the Tour must cancel the tour season due to reasons directly related to COVID-19, a full refund, including deposit, will be issued to all participants. If a participant is unable to travel to St. Paul Island due to inability to receive a COVID-19 vaccination or test result despite attempting to do so, they may be entitled to a full refund, less deposit paid for the number in the party.

CANCELLATION CHARGES

Cancellations must be received in writing (email, fax, posted mail) and will become effective on the date of receipt.

The purchase price for a confirmed reservation that is cancelled by the Tour participant will be partially refunded according and subject to the following:

- ❖ For cancellation 60 days or more prior to the departure date, the refund is 100% of the Tour purchase price, less the deposit.
- ❖ For cancellation 30-59 days prior to the departure date, the refund is 50% of the Tour purchase price, less the deposit.
- ❖ For cancellation 15-29 days prior to the departure date, the refund is 25% of the Tour purchase price, less the deposit.
- ❖ **NO PORTION OF THE PURCHASE PRICE WILL BE REFUNDABLE IN THE CASE OF A CONFIRMED RESERVATION THAT IS CANCELLED FEWER THAN FIFTEEN (15) DAYS PRIOR TO THE DEPARTURE DATE.**

St. Paul Island Tour strongly urges all Tour participants to purchase trip-cancellation insurance to cover the cost of the Tour. Information on trip-cancellation insurance can be obtained through the booking travel agency. TDX also recommends that Tour participants schedule a day or two buffer time in Anchorage before the departure date and after the scheduled return date to ensure that any unanticipated delay on St. Paul Island will not disrupt other travel plans.

CANCELLATION CHARGES FOR EXTRA SERVICES

Additional hotel nights and other extra services booked in connection with St. Paul Island Tour are subject to specific cancellation penalties. These will be provided at the time of booking and noted on the invoice.

CLAIMS AND REFUNDS

All claims for refund of Tour purchase price paid shall be made to:

TDX St. Paul Island Tour

Accounting Dept.

3601 C Street – Suite 1000

Anchorage, AK 99503 USA

CHANGES IN TOUR

St. Paul Island Tour reserves the right to make changes to the Tour itinerary (including arranged sightseeing), ground or air transportation, or accommodations, in light of unforeseen circumstances beyond St. Paul Island Tour's reasonable control. Increased out-of-pocket costs resulting from any such change will be invoiced to Tour participants prior to the departure date and must be paid at or prior to the time of departure. A Tour participant who fails to pay the amount of such increased out-of-pocket costs will be deemed to have cancelled his or her reservation on the date of departure, and no portion of the purchase price will be refunded. Out-of-pocket cost savings resulting from any change will be refunded to the Tour participant through the booking travel agency within 10 days after completion of the Tour. Every effort will be made to operate itineraries as planned, but alterations may occur even after the final itinerary has been issued.

INCLUDED IN TOUR PURCHASE PRICE

Airport transfers; air transportation between Anchorage, Alaska, and St. Paul Island; fully hosted and guided tours for the full day while on St. Paul Island; accommodations at King Eider Hotel; meals; coffee, tea, soft drinks and water at included meals; portage of two (2) pieces of baggage; complimentary internet access while at King Eider Hotel; local city taxes and all entrance fees for the St Paul Heritage Museum and The St. Peter and Paul Church (subject to community imposed COVID-19 restrictions). The Tour price is based on shared

accommodations at King Eider Hotel and shared transportation while on St. Paul Island. Single accommodations may be reserved only if space is available and subject to an additional charge.

Washing machine and dryer are available on a first-come, first-served basis at the King Eider Hotel. A limited supply of rain and outdoor gear is available on a first-come, first-served basis.

NOT INCLUDED IN TOUR PURCHASE PRICE

Airfare to and from Anchorage, Alaska; costs associated with obtaining passports or entry visas; reciprocity and other border fees; airport departure taxes; excess baggage charges; gratuities to the Tour director and driver-guides; meals other than those specified in the itinerary; alcoholic beverages; sightseeing or other activities not included in the published itinerary; and personal expenses while on St. Paul Island for sundries and personal items.

AIR TRANSPORTATION

Tour departure is from Anchorage, Alaska. Airfare to and from Anchorage is not included in the Tour purchase price.

St. Paul Island Tour will arrange round-trip, economy-class air transportation for Tour participants from Anchorage to St. Paul Island. Such air transportation will be provided by FAA-certified (Part 121) commercial air carriers that are experienced in navigating and operating aircraft in remote locations in Alaska. These air carriers are independent contractors and are not owned, managed, controlled or operated by St. Paul Island Tour. Confirmation of a reservation is subject to flight confirmation, which is subject to availability. Air reservations cannot be confirmed until the Tour participant provides his or her date of birth and a copy of his or her identification or passport.

Your airline ticket for air transportation to and from St. Paul Island constitutes a contract between you and the air carrier providing that transportation (and not St. Paul Island Tour), even if arranged for by, and purchased through, St. Paul Island Tour.

Each Tour participant agrees to look exclusively to the air carrier for any claims arising out of such air transportation. **UNDER NO CIRCUMSTANCE SHALL ST. PAUL ISLAND TOUR OR ANY BOOKING OR TRAVEL AGENCY BE LIABLE FOR ANY DAMAGES OF ANY NATURE WHATSOEVER THAT ARE SUFFERED BY THE TOUR PARTICIPANT IN CONNECTION WITH SUCH AIR TRANSPORTATION, INCLUDING WITHOUT LIMITATION ANY DAMAGES RESULTING FROM FLIGHT SCHEDULE CHANGES, DELAY AND/OR CANCELLATIONS, OR BAGGAGE HANDLING, OR ANY DAMAGES FOR ILLNESS, INJURY, DISABILITY OR DEATH, OR LOSS OF OR DAMAGE TO PROPERTY, EVEN IF SUCH DAMAGES ARE THE RESULT OF NEGLIGENT, RECKLESS, OR WILLFUL ACTS OR OMISSIONS BY THE AIR CARRIER.**

During the summer months, the weather on St. Paul Island is unpredictable. Without limiting the preceding paragraph, if weather, aircraft and/or other delays prevent a Tour participant from returning to Anchorage as scheduled, the Tour participant is solely responsible for the cost of additional lodging, meals and any other costs that result.

BAGGAGE

Owing to operational considerations, the air carrier for travel between Anchorage and St. Paul Island restricts passengers to one piece of checked baggage weighing less than 50 pounds. Take notice that any baggage checked in excess of one piece will be assessed excess baggage fees and marked as voluntary separation at check-in in the event baggage is unable to load for the selected flight.

One carry-on and one personal item is allowed on board your flight. For guests staying at the Coast Inn at Lake Hood in Anchorage before or after the Tour, St. Paul Island Tour provides storage of excess baggage at Coast Inn at Lake Hood during the Tour. Details will be provided in your pre-travel documentation provided by St. Paul Island Tour. Each Tour customer is responsible for the security of his or her baggage, its contents and any personal effects

throughout the travel program (including without limitation items stored by St. Paul Island Tour at Coast Inn at Lake Hood), and St. Paul Island Tour is not liable for lost or damaged baggage or other items. Please check with your international carrier for other baggage restrictions and fees applicable to international flights.

PRICES AND ARRANGEMENTS

Quoted program prices are per person, double occupancy at the King Eider Hotel, St Paul, except where indicated. Although not expected, published prices may be modified due to factors not foreseen at the time of printing. St. Paul Island Tour is under no obligation to give a breakdown in price of any Tour. Pre- and post-Tour stays in the City of St. Paul are available only to Tour participants, subject to availability.

St. Paul Island Tour accepts all major credit cards, offers a 2% discount for cash payments received by direct wire transfer, bank or cashier's check.

ROOM SINGLE SUPPLEMENTS/SPECIAL REQUESTS

Single supplements are available on request at the King Eider Hotel. Specific requests for single rooms or special needs will be accommodated on a first-come, first-served basis. Please note that, while every effort will be made to secure a special request, it cannot be guaranteed.

CHILD POLICY

The minimum age is 12 years old unless noted on the itinerary, and all children under age 18 must be accompanied by an adult. Details will be provided at the time of booking. St. Paul Island Tour reserves the right to exceed the standard tour-group size on any Tour to accommodate a family.

ACTIVE ELEMENTS & CONDUCT

Some active elements have been incorporated into Tour itineraries. To enjoy the trips as

intended, a minimum level of fitness is required. St. Paul Island Tour will require prior notice if any participant has any physical or other condition or disability that would prevent them from participating in active elements of any trip and/or could create a hazard to him or herself or to other members of the group. The Tour participant represents that neither he nor she nor anyone travelling with him or her has any physical or other condition or disability that could create a hazard to him or her or other members of the Tour. St. Paul Island Tour reserves the right to cancel or limit participation by anyone it considers unsuitable due to fitness level. St. Paul Island Tour also reserves the right to remove from the Tour, at the participant's own expense, any participant whose physical condition or conduct negatively impacts the enjoyment of the other participants or disrupts the Tour.

PHOTOGRAPHY DURING TRAVEL

St. Paul Island Tour may take photographs and video of Tour participants during the operation of any Tour for later use by the St. Paul Island Tour in connection with its business. By participating in the Tour, a Tour participant agrees to allow St. Paul Island Tour and its agents and contractors to capture, create, store, publish, and otherwise use images of the Tour participant, and to disclose, reproduce, and distribute those images throughout the world for any business purpose, in any media whatsoever and by any and all means, now known or hereafter invented, including without limitation displaying on an internet website. All such images and all rights therein, including without limitation copyrights, are and shall remain the sole and exclusive property of St. Paul Island Tour or its contractors.

LIMITS ON ST. PAUL ISLAND TOUR RESPONSIBILITY

St. Paul Island Tour purchases air transportation, hotel accommodations and other services, including meals, guide services, and museum tours, from independent contractors (including, from time to time, affiliates of St. Paul Island Tour). Each Tour participant agrees to look exclusively to the independent contractor providing such services for any claims arising out of those services. **UNDER NO CIRCUMSTANCE SHALL ST. PAUL ISLAND TOUR OR ANY BOOKING**

OR TRAVEL AGENCY BE LIABLE FOR ANY DAMAGES OF ANY NATURE WHATSOEVER THAT ARE SUFFERED BY THE TOUR PARTICIPANT IN CONNECTION WITH SERVICES PROVIDED BY AN INDEPENDENT CONTRACTOR, INCLUDING WITHOUT LIMITATION DAMAGES FOR ILLNESS, INJURY, DISABILITY OR DEATH, OR LOSS OF OR DAMAGE TO PROPERTY, EVEN IF SUCH DAMAGES ARE THE RESULT OF NEGLIGENT, RECKLESS, OR WILLFUL ACTS OR OMISSIONS BY THE INDEPENDENT CONTRACTOR.

St. Paul Island Tour shall not be liable for any breach of contract in connection with the Tour caused in whole or in part by strike; work stoppage or slowdown; local labor shortage; accident; fire; storm; flood; riot; war; failure of equipment; delay in transportation; shortage of fuel, power or material; law, regulation or requirement of any government or government agency; act of God; or other event, circumstance or contingency beyond the reasonable control of St. Paul Island Tour.

RELEASE AND INDEMNITY

Any excursions outside the City of St. Paul ("Activities"), including without limitation excursions involving bird and animal viewing activity or hiking, carry an inherent risk of serious illness, injury, disability or death. These risks are increased by the fact that these Activities take place in a remote, wilderness location, far from medical facilities. These risks include but are not limited to on- and off-road vehicle accidents, trip-and-falls on unimproved paths and rough terrain, falls from heights, and exposure to the elements. You take complete responsibility for your own health and safety and for the protection of your property, and you agree to assume all risks of illness, injury, disability or death, loss of or damage to property, whether such risks are foreseen or unforeseen, that may befall you as a result of participating in any Activities, even if such risks are created by the negligence of St. Paul Island Tour.

YOU HEREBY RELEASE ST. PAUL ISLAND TOUR AND ITS PARENT AND SUBSIDIARY AND AFFILIATED COMPANIES AND ALL OF THEIR RESPECTIVE MEMBERS, SHAREHOLDERS, DIRECTORS, MANAGERS, OFFICERS, EMPLOYEES, AGENTS AND CONTRACTORS (COLLECTIVELY "RELEASEES") WITH RESPECT TO ANY AND ALL ILLNESS, INJURY, DISABILITY, DEATH, OR LOSS

OF OR DAMAGE TO PROPERTY, INCIDENT TO YOUR INVOLVEMENT IN THE TOUR OR ANY ACTIVITIES (AS DEFINED ABOVE), WHETHER ARISING FROM THE NEGLIGENCE OF THE RELEASEES OR OTHERWISE, to the fullest extent permitted by law.

YOU HEREBY AGREE TO INDEMNIFY AND HOLD HARMLESS ALL OF THE ABOVE RELEASEES FROM ANY AND ALL CLAIMS OR LIABILITIES ARISING FROM OR RELATING TO YOUR PARTICIPATION IN THE TOUR OR IN ANY ACTIVITIES, EVEN IF ARISING FROM THE NEGLIGENCE OF RELEASEES, to the fullest extent permitted by law.

LIMITATIONS ON DAMAGES

In no event shall St. Paul Island Tour be liable for any indirect, incidental, special, consequential, or punitive damages (including without limitation lost revenue, lost profit, or business interruption), whether foreseeable or unforeseeable, in connection with any claim of any nature whatsoever relating to these Terms and Conditions, the Tour or any Tour-related activity, any information provided in connection with the Tour or any Tour-related activity, or any acts or omissions by St. Paul Island Tour, even if St. Paul Island Tour has been advised of the possibility of such damages.

WITHOUT LIMITING THE FOREGOING, THE AGGREGATE LIABILITY OF ST. PAUL ISLAND TOUR FOR ALL CLAIMS WHATSOEVER ARISING OUT OF OR RELATING TO THESE TERMS AND CONDITIONS, THE TOUR OR ANY ACTIVITIES (AS DEFINED ABOVE), ANY INFORMATION PROVIDED IN CONNECTION WITH THE TOUR OR ACTIVITIES, OR ANY ACTS OR OMISSIONS BY ST. PAUL ISLAND TOUR, WHETHER IN CONTRACT, TORT, STRICT LIABILITY, OR OTHERWISE, SHALL NOT EXCEED AMOUNTS PAID BY THE TOUR PARTICIPANT TO ST. PAUL ISLAND TOUR FOR THE TOUR.

DISPUTES

Jurisdiction and venue for any dispute, controversy or claim arising out of or relating to these Terms and Conditions, the Tour or any Tour-related activity, any information provided in

connection with the Tour or any Tour-related activity, or any acts or omissions by St. Paul Island Tour shall be exclusively in the state or federal courts at Anchorage, Alaska. Each party shall bear its own fees, costs, and expenses.

ACCEPTANCE OF TERMS AND CONDITIONS

ANY PAYMENT TO ST. PAUL ISLAND TOUR CONSTITUTES YOUR ACCEPTANCE OF THE TERMS AND CONDITIONS SET OUT HEREIN AND IN MORE SPECIFIC PRE-TRAVEL DOCUMENTATION, INCLUDING THE TOUR PARTICIPANT INFORMATION FORM.

AMENDMENTS

St. Paul Island Tour reserves the right to correct any errors or omissions in its published materials and to amend these Terms and Conditions at any time as the result of any material changes to legislation or regulation. All amended Terms and Conditions shall automatically be effective upon being posted by St. Paul Island Tour to the website www.stpaulislandtour.com. Accordingly, guests should check the website prior to travel in order to ensure they are aware of any changes.

©2022 ST. PAUL ISLAND TOUR LLC

Appendix 3a – COVID-19 Screening Form



ST. PAUL ISLAND TOUR COVID-19 SCREENING FORM

PLEASE READ EACH QUESTION CAREFULLY	PLEASE CIRCLE THE ANSWER THAT APPLIES TO YOU
<p>Have you experienced any of the following symptoms in the past 48 hours:</p> <ul style="list-style-type: none"> ▪ fever or chills ▪ cough ▪ shortness of breath or difficulty breathing ▪ fatigue ▪ muscle or body aches ▪ headache ▪ new loss of taste or smell ▪ sore throat ▪ congestion or runny nose ▪ nausea or vomiting ▪ diarrhea 	<p>YES or NO</p>
<p>Within the past 14 days, have you been in close physical contact (6 feet or closer for a cumulative total of 15 minutes) with:</p> <ul style="list-style-type: none"> ▪ Anyone who is known to have laboratory-confirmed COVID-19? -OR- ▪ Anyone who has symptoms consistent with COVID-19? 	<p>YES or NO</p>
<p>Are you isolating or quarantining because you may have been exposed to a person with COVID-19 or are worried that you may be sick with COVID-19?</p>	<p>YES or NO</p>
<p>Are you currently waiting on the results of a COVID-19 test?</p>	<p>YES or NO</p>

PRINTED NAME: _____

SIGNATURE: _____

TODAY'S DATE: _____

Rev: 2 Feb 2021

Appendix 3b – Ravn Alaska COVID-19 Protocols



[Book](#) [My Trips](#) [Rewards](#) [Charter](#) [Cargo](#) [Help](#)



🤔 Ravn and COVID-19 🤔

COVID-19 Policy

New CDC Mandates

1. Federal law requires each person to wear a mask at all times throughout the flight, including during boarding and deplaning.
2. Refusing to wear a mask is a violation of federal law and may result in denial of boarding, removal from the aircraft, and/or penalties under federal law.

Ravn Alaska takes health and safety very seriously and asks their passengers to follow current CDC protocols to help prevent the spread of COVID-19.

Please:

- Wash hands properly whenever necessary.
- Do not shake hands or make direct contact with employees or customers.
- Practice social distancing of 6+ feet from others.
- Wear a cloth face covering at all times during the flight and while in the airport.

Masks are available for \$5.

Passengers will be denied boarding who refuse to comply with these policies.

If you have a disability and are unable to wear a mask, please call our reservations line at **800-866-8394** to request an exemption from the mask requirement.

Exemptions will require:

- Documentation from a licensed health care provider as to your inability to wear a mask due to your disability; and
- Proof of a negative test result from an FDA approved molecular NAAT or PCR Covid-19 test taken within 72 hours of your scheduled flight departure
- Documentation from your health care provider must be submitted to Ravn Alaska **at least 72 hours before your flight**. We recommend that you contact us at least one week before departure to start the exemption process.

Thank you for helping us help each other help keep everybody safe.

Hang in there,
Ravn Alaska

Local COVID-19 Resources

- Anchorage
- Kenai Peninsula
- Valdez
- Unalakleet
- St. Paul
- Unalaska/Dutch Harbor
- Other Local & Borough Resources

Appendix 4a – City of Saint Paul Emergency Ordinance 22-93

St. Paul Island Tour, LLC
3601 C St., Suite 1000-19
Anchorage, AK 99503

Ph: 907.546.4158
Fax: 907.278.2316
stpaulislandtour.com

- Coming 17 Feb 2022 -

Appendix 4b – St. Paul Island Map and Location of POSS Camp

St. Paul Island Tour, LLC
3601 C St., Suite 1000-19
Anchorage, AK 99503

Issued: 18 Feb 2022
Rev: 1 Feb 2022 Ver. 1

Ph: 907.546.4158
Fax: 907.278.2316
stpaulislandtour.com



Appendix 4c – Health Monitoring Checklist

ST. PAUL ISLAND TOUR HEALTH MONITORING CHECKLIST

While present on St. Paul Island, Alaska you are required to monitor your health on a twice daily basis. Monitoring requires you to have your body temperature taken twice daily and to record any symptoms you experience that could be related to COVID-19. This checklist has been created to help keep accurate records of your body temperature and any symptoms you experience. Symptoms of COVID-19 include but are not limited to:

- Headache
- Fever (100.3°F)
- Fatigue/drowsiness
- Sore throat
- Cough or chest discomfort/difficulty breathing

Name: _____

Tour Start Date: _____

Day	AM Body Temperature	PM Body Temperature	AM Symptoms	PM Symptoms
Day 1				
Day 2				
Day 3				
Day 4				
Day 5				
Day 6				
Day 7				
Day 8				
Day 9				
Day 10				

If you begin to develop symptoms of COVID-19:

- You must report this to the Tour Director immediately, so that extra precautions can be taken to secure your and health and safety and that of the Community of St. Paul and other Tour guests.
- The Center for Disease Control has developed an online tool to help you determine if you need further assessment or testing for COVID-19.
- You can complete the assessment for yourself or on behalf of someone else if they are unable to do so.
- The online tool can be accessed online through this link: <https://www.cdc.gov/coronavirus/2019-ncov/symptoms-testing/coronavirus-self-checker.html>
- If your symptoms are severe; e.g. shortness of breath, call 9-1-1 immediately (there is a landline telephone in the King Eider Hotel lobby) and then notify the Tour Director that medical personnel will be arriving at the hotel.

Rev: 22 Feb 2021

Appendix 4d – Coast Clean™ Protocols

A. See attached document (96 pgs.)